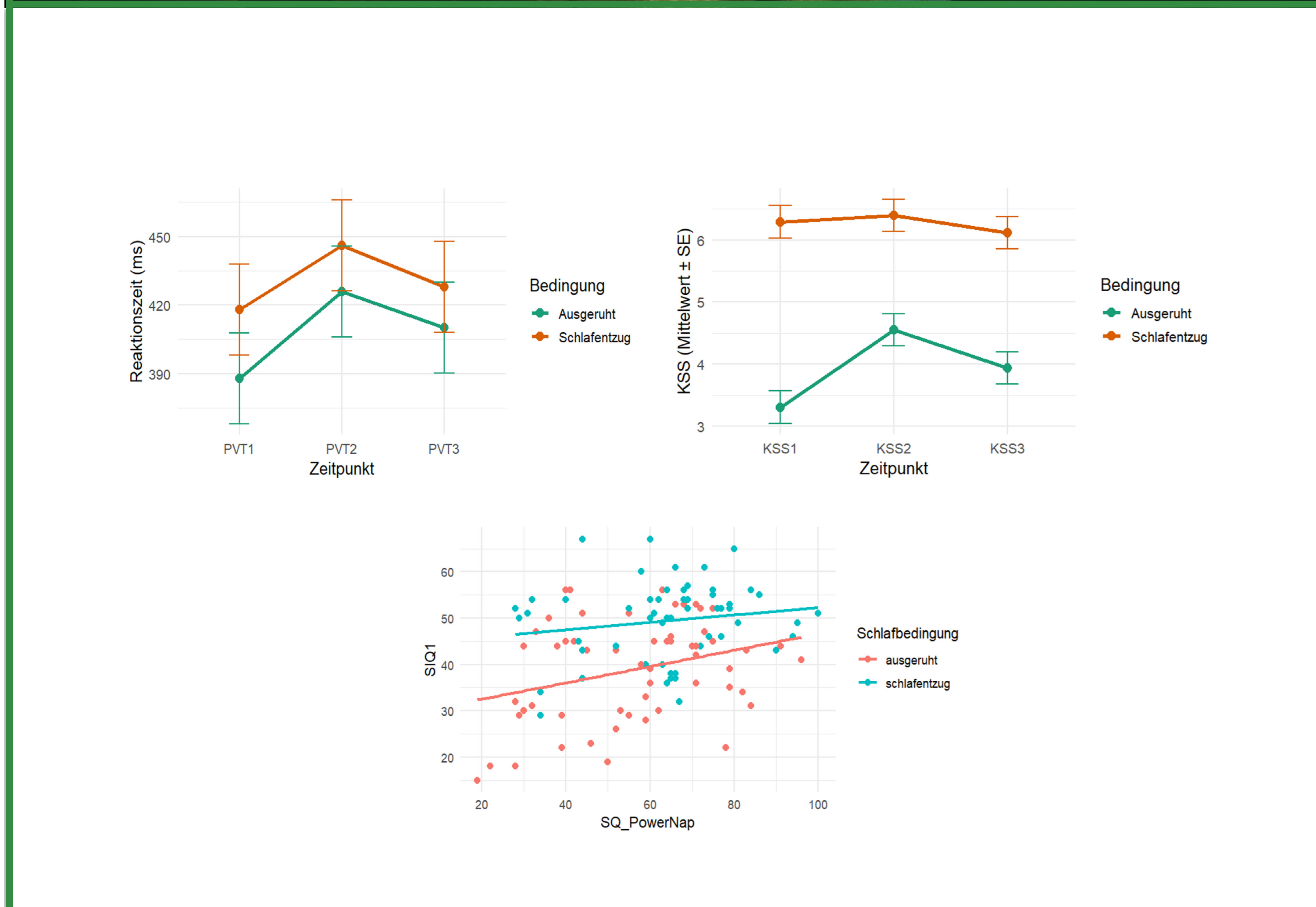


Take-over after Sleep

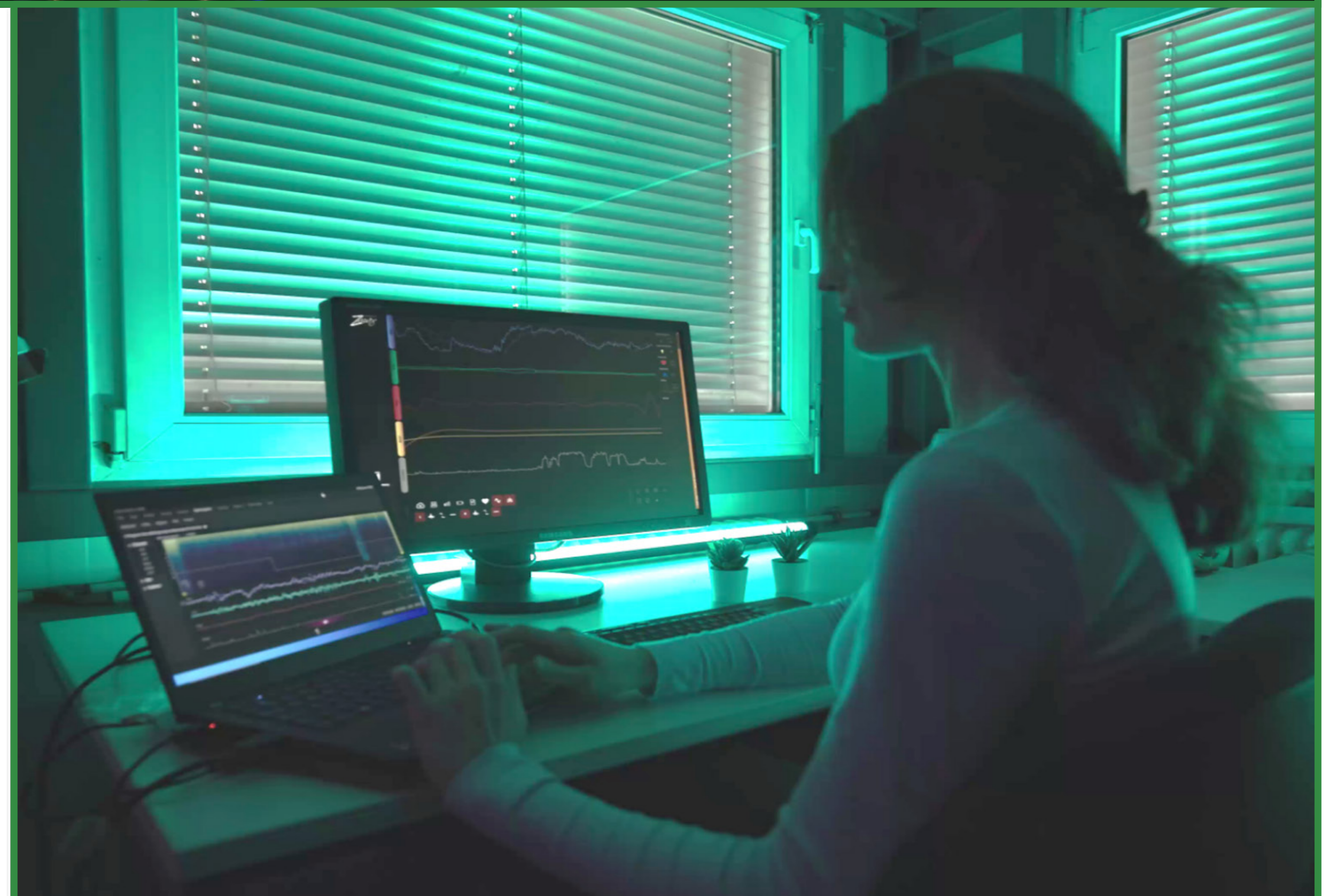
Flowchart of the Sleep Study

Participant wearing the Sleep EEG

The flowchart illustrates the experimental procedure in two rows. The first row shows the initial driving phase: 'Start: Raststätte' (KSS1, PVT1, 300m), 'Eingewöhnungsphase' (5 min, 4.2 km, no measurements), 'Car-Following Aufgabe' (6.2 km, simultaneous LKT), 'Kollisionsvermeidungsaufgabe' (3.1 km), and 'LCT' (3.1 km). The second row shows the sleep phase: 'Schlafen' (30 min, 5x10.2 km, automated driving, waking up: KSS2, SIQ1, PVT2), 'Car-Following Aufgabe' (6.2 km, simultaneous LKT), 'Kollisionsvermeidungsaufgabe' (3.1 km), 'LCT' (3.1 km), and 'Ende: Raststätte' (1.5 km, KSS3, SIQ2, PVT3).



Results of the Sleep Study



Monitoring Sleep Phase